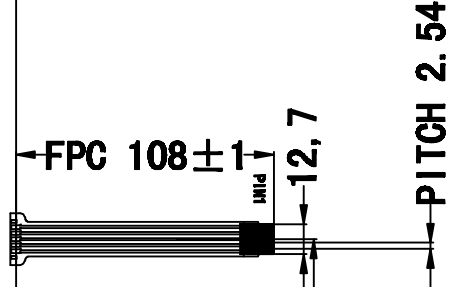
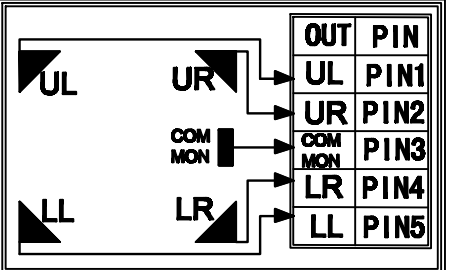
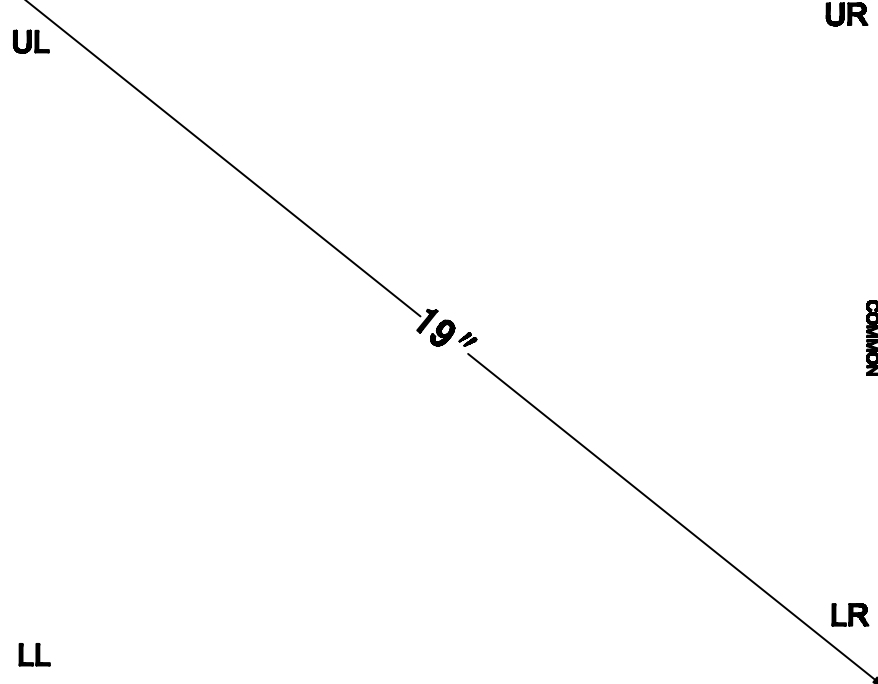


396 (Touch Pane)
 377 (Visual area)
 375 (Action Area)

323 (Touch Pane)
 304 (Visual area)
 300 (Action Area)



Front: ITO Film-0.188mm
 Anti newton ring
 Back Glass-1.8mm
 Thick: 2.3 ± 0.15

- Instruction:
- Type: Film to Glass
 - Operating Voltage: ≤10V
 - Response Time: ≤10ms
 - Storage Temperature: -20℃~+70℃
 - Operation Temperature/Humidity: -10℃~+60℃/ 20%~95%
 - Hitting Life: >10,000,000 Times ,250gf Force;
 - writing Life>1,000,000 Times 250gf Force;
 - Connect Material:FPC+PIN

- Film Thickness: 0.188mm
- Glass Thickness: 1.8mm
- Light transmission: ≥78%
- Force: 100g or more
- Linearity: ≤5%
- Insulation: ≥20M Ω
- Resistance: 50Ω < PIN1, PIN2 < 250Ω
 50Ω < PIN2, PIN4 < 250Ω
 50Ω < PIN4, PIN5 < 250Ω
 50Ω < PIN5, PIN1 < 250Ω
- Surface Hardness ≥3H(pencil)

| Touch Screen ET-5190A1 | | | | | |
|------------------------|------------|-----------|----------|-------------|-----|
| REVISIONS | | | | | |
| SCALE | 1:1 | MATERIAL | F/G | Version | 1.0 |
| UNIT | mm | TOLERANCE | ±0.3m | NO.: 1 of 1 | |
| DESIGN | Jeka | DATE | 20090715 | Eagle Touch | |
| CHECK | peter • ii | DATE | 20090715 | | |
| RELEASE | J | DATE | 20090715 | | |