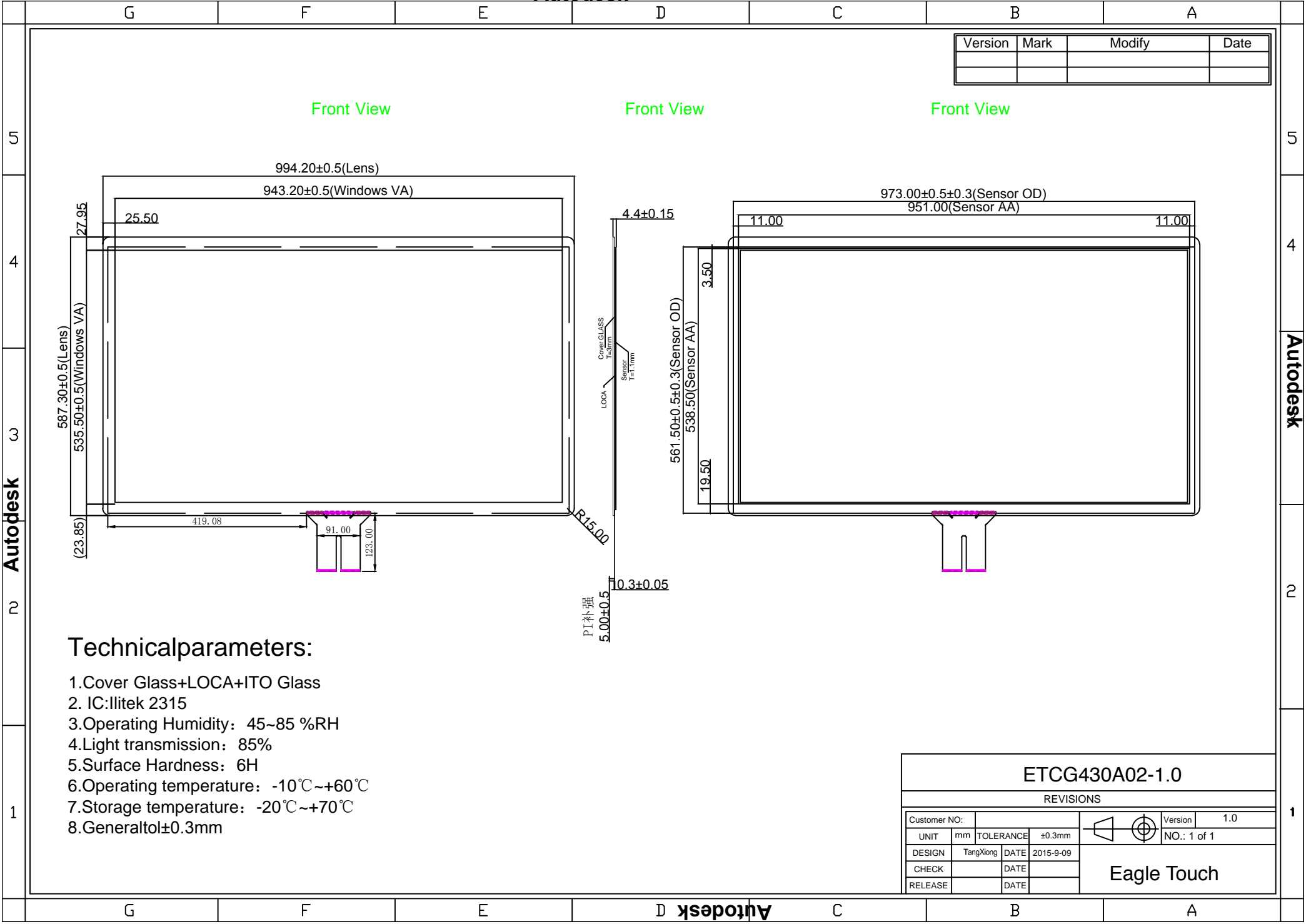


Version	Mark	Modify	Date

Front View

Front View

Front View



Technical parameters:

1. Cover Glass+LOCA+ITO Glass
2. IC: Ilitek 2315
3. Operating Humidity: 45~85 %RH
4. Light transmission: 85%
5. Surface Hardness: 6H
6. Operating temperature: -10℃~+60℃
7. Storage temperature: -20℃~+70℃
8. General tol±0.3mm

ETCG430A02-1.0					
REVISIONS					
Customer NO:				Version	1.0
UNIT	mm	TOLERANCE	±0.3mm	NO.: 1 of 1	
DESIGN	TangXiong	DATE	2015-9-09	Eagle Touch	
CHECK		DATE			
RELEASE		DATE			